

# School WASH - Effective Tool to Address Sanitation and Hygiene

## CONTEXT

### What is WASH?

The WASH Program is a combination of water, sanitation and hygiene which is planned in such a way that it is effectively and efficiently implemented in five schools schools form PNP & NNP Town panchayats.

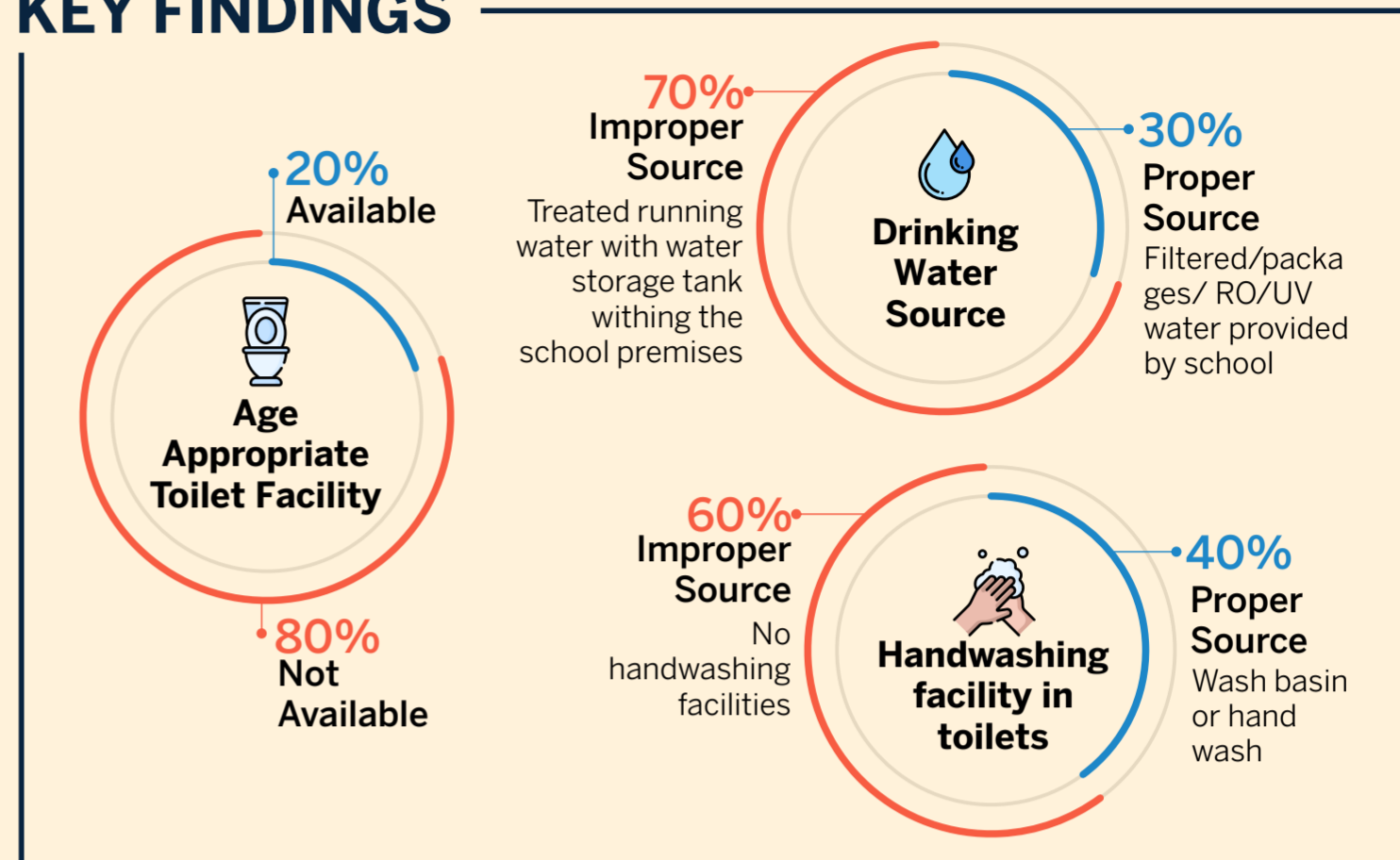
### Why WASH is important?

The program is planned considering the cultural insights along with environmental & social realities; which not only promotes hygiene and increases access to quality education but also supports the sustainable access to the overall WASH facilities in low income communities.

### What did the program focused to achieve?

Spreading the word about the Sustainable sanitation to the communities through children.

## KEY FINDINGS



## APPROACHES

### Infrastructure Improvement

The program supported 5 schools to improve their existing WASH Infrastructure such as setting up hand wash stations and few retrofittings done to the toilet infrastructures.



Wall graffiti for BCC



Retrofitting roofs of toilets



Renovation of toilet structures



Retrofitting Drinking water facilities and Handwashing area

### Awareness and Training

The City TSU developed infographic IEC Materials into three sections such as water, sanitation & hygiene for the school children along with interactive activities for the children to learn better.

#### Water Section



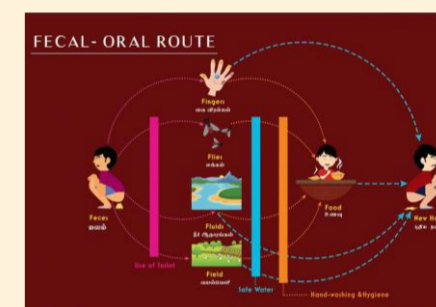
- Significance of water - Nature of water, source of water
- Difference between safe & pure water - Water testing & Water treatment methods
- Wastewater management - Types of wastewater and its sources contamination

#### Sanitation Section



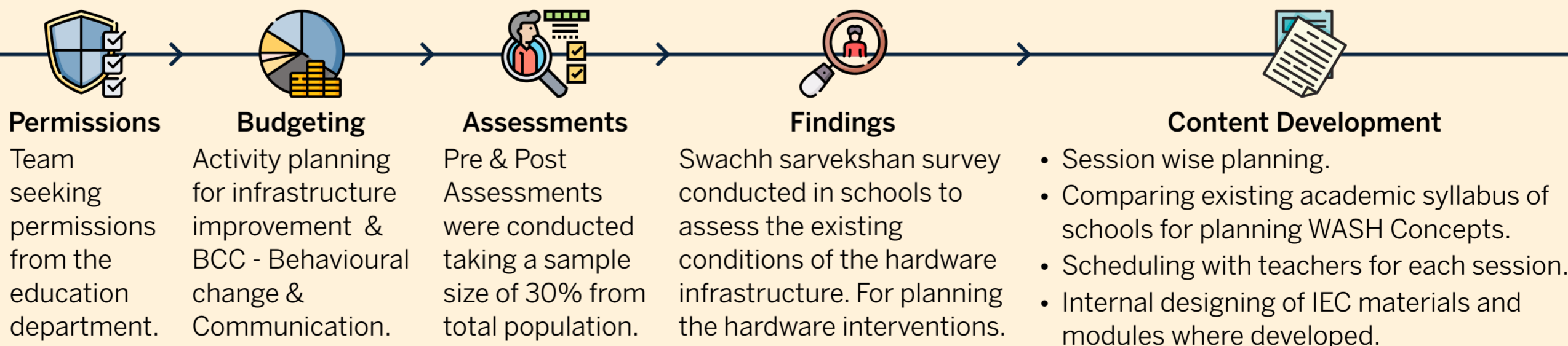
- What is toilet?
- Significance of toilet - Poop calculation, story of cholera spreading.
- Where does your poop go? - elaborating the physical infrastructure of toilets and containment structures
- The FSTP - FSM Flow chart

#### Hygiene Section



- Why should we wash hands? - Elaborating the steps of hand washing
- What is food hygiene?
- How to keep yourself clean? - Teaching children the toilet etiquette.

## PROGRAMME PROCESS



## LEARNINGS & BENEFICIARY

Developments & support extended to support the existing WASH infrastructure along with awareness & training programs with activities for teachers & children

Convergence & Networking of many other WASH Experts & similar educational institutions city wide keeping the concepts of FSM TO its first priority

Community Level BCC through school going children developed more rapport with the households residing in low income settlements of PNP - NNP for awareness on WASH & FSM

2389 students & 107 teachers from all 5 schools together are being benefited from the program so far.

